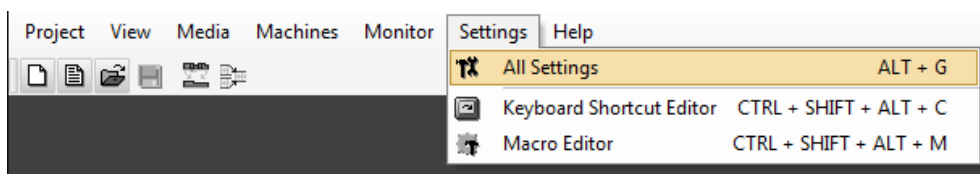


- For Pyramix users, follow this document to upgrade from V8.0 to V8.1
- For Pyramix & VCube Essentials users, use this document in conjunction with the VCube V4.0 to V4.1 guide
- For Pyramix & VCube LE / SE / XE users, use this document in conjunction with the VCube V4.0 to V4.1 guide
- For VCube users, use the VCube V4.0 to V4.1 guide only
- HORUS: Horus users should install the latest certified firmware (*Version 1.1.7 build 20795*)  
Available here: <http://www.merging.com/horus/download>

## BACKUP SETTINGS

Within the Pyramix application, navigate to the following menus and export Pyramix settings:



Settings > All Settings > Save > Save Pyramix settings file (\*.pms)  
 Settings > Keyboard Shortcuts > Save Table > Save Pyramix Keyboard Shortcut file (\*.pmk)  
 Settings > Macro Editor > Export > Save Pyramix Macro file (\*.pmm)

## BACKUP FILES

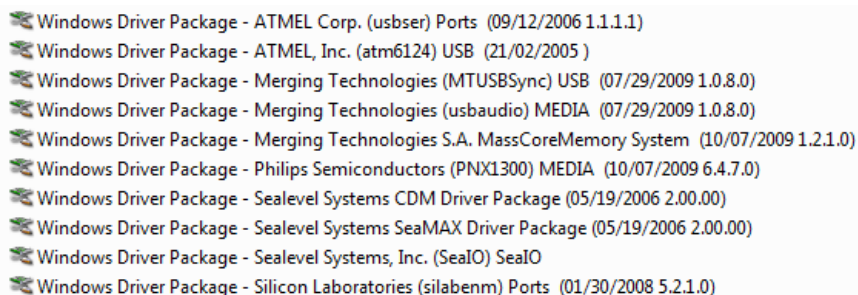
In Windows Explorer create a backup copy of the following folders:

C:\Program Files\Merging Technologies\Pyramix Virtual Studio\Projects  
 C:\Program Files\Merging Technologies\Pyramix Virtual Studio\Reports  
 C:\Program Files\Merging Technologies\Pyramix Virtual Studio\Templates  
 C:\PMX Media  
 C:\PMX\_ALT\_BACKUP

## UNINSTALL

Windows XP Start Menu > Control Panel > Add/Remove Programs  
 Windows Vista / 7 Start Menu > Control Panel > Programs & Features

- Uninstall Pyramix
- Uninstall the following Windows Driver Packages

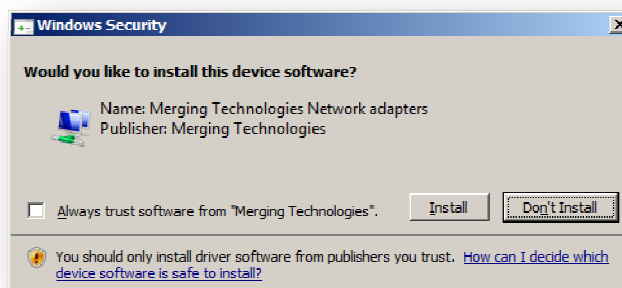


*If Masscore is installed:*

- Uninstall Interval Zero RTX 2009
- Don't Reboot
- Run MT Cleanup utility
- Reboot the PC

## INSTALL

- Run the current Pyramix installer
- Install all necessary prerequisites for Version 8
- Accept License Agreement
- Leave User Name as is
- Choose Complete setup type
- Choose Install
- During the installation process, 9 Windows Security messages will appear. Choose Install for all of these
- At the end of the installation, choose Yes to restart your computer
- Reboot



## MT SECURITY SETTINGS

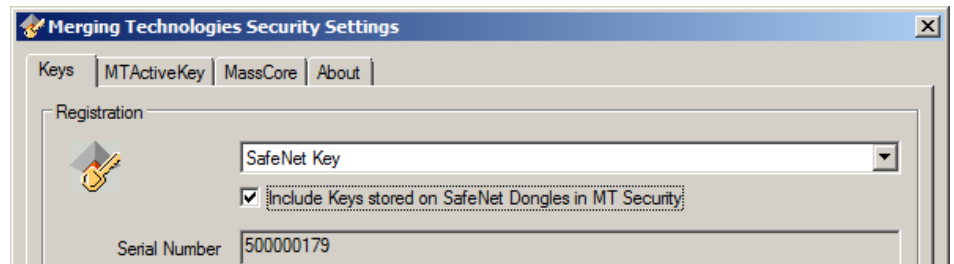
- After reboot, you will need to navigate to the Security panel

Start Menu > Control Panel > MT Security Settings

- Click Import Key
- Browse to your Merging \*.mtk file
- Click to Open
- When prompted, choose Yes, you are sure you want to enter the new keys

## NATIVE

- Ensure that MT Security Settings can read your Dongle Serial Number
- Ensure the following box is ticked: *Include Keys stored on SafeNet Dongles in MT Security*



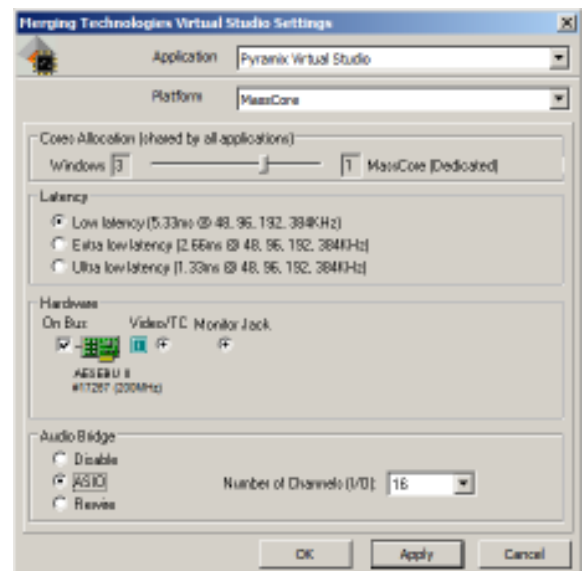
## VS3 CONTROL PANEL

Start Menu > Control Panel > VS3 Control Panel

## NATIVE

If using the 'Native' or ASIO platform, select the following settings

- Application: Pyramix Virtual Studio
- Platform: Native - ASIO
- Driver name: ASIO driver for your ASIO device



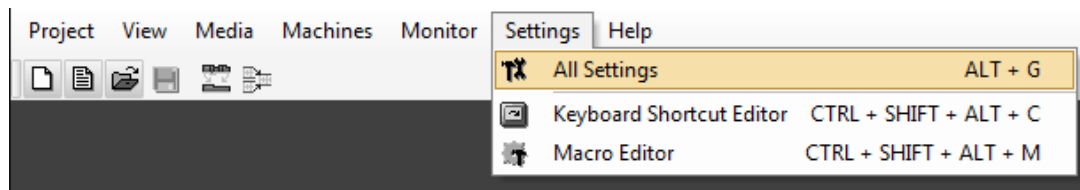
## RESTORE FILES

In Windows Explorer restore your copy of the following folders:

```
C:\Program Files\Merging Technologies\Pyramix Virtual Studio\Projects  
C:\Program Files\Merging Technologies\Pyramix Virtual Studio\Reports  
C:\Program Files\Merging Technologies\Pyramix Virtual Studio\Templates  
C:\PMX Media  
C:\PMX_ALT_BACKUP
```

## RESTORE SETTINGS

Within the Pyramix application, navigate to the following menus and import Pyramix settings:



```
Settings > All Settings > Load > Open Pyramix settings file (*.pms)  
Settings > Keyboard Shortcuts > Load Table > Open Pyramix Keyboard Shortcut file (*.pmk)  
Settings > Macro Editor > Import > Open Pyramix Macro file (*.pmm)
```